



# TECHNICAL UPDATE: Wheat Bulb Fly – Plant Invasion

21st February 2012

## Plant Invasion has begun in East Anglia

The recent spell of cold weather has resulted in a protracted period of egg hatch for Wheat Bulb Fly.

However, the weather this week is becoming warmer, which will both accelerate egg hatch and encourage the start of plant invasion. It is likely to begin in East Anglia, then work its way North. Although overall egg numbers are lower than last year (which was extremely high) there is potential for yield loss especially on later drilled crops coming out of winter with fewer tillers than is ideal. In this situation we cannot afford to lose plants or tillers and a 'dead heart' spray is essential.

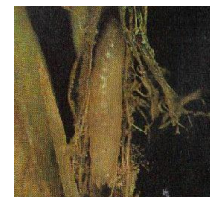


A well timed spray of **Danadim Progress** should be used once plant invasion is seen to be underway, bearing in mind however that **only one application of Danadim Progress is permitted per crop at this timing.** Do not wait until the 'dead heart' symptoms are widespread.

Best results are achieved when the pest is still small.

**Apply Danadim Progress at 1700ml/ha in 200-400l/ha.**

Where **Danadim Progress** is used in sequence with Broadway Star, a minimum of 14 days should be left between treatments.



For further details and discussion, contact your local Headland representative, or:

Andrew C Speed  
Technical Sales Manager  
Headland Agrochemicals Ltd.  
Home office: 01270 750008  
Mobile: 07525 703361  
E-mail: [andrew.speed@headlandgroup.com](mailto:andrew.speed@headlandgroup.com)

Sam J Pociecha  
Technical Sales Specialist  
Headland Agrochemicals Ltd.  
Home office: 01747 871613  
Mobile: 07540 127474  
E-mail: [sam.pociecha@headlandgroup.com](mailto:sam.pociecha@headlandgroup.com)



All third party trademarks acknowledged  
Always read the label. Use pesticides safely  
Danadim Progress contains dimethoate  
Broadway Star contains florasulam + pyroxulam

