



Technical Update - Wheat Bulb Fly, Plant Invasion

7th February 2011

Plant Invasion has begun in East Anglia

Due to the highest egg numbers for about seven years, combined with ever changing weather conditions, the control of Wheat Bulb Fly this season will be important. Some egg-hatch sprays have been applied, but the overall threat to many crops means they will require monitoring and subsequent treatment.

Plant invasion is underway in East Anglia, with potential for yield loss especially on later drilled crops coming out of winter with fewer tillers than is ideal. In this situation we cannot afford to lose plants or tillers and a 'dead heart' spray is essential.

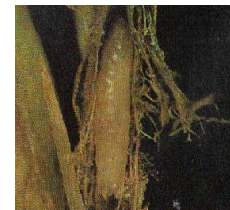


A well timed spray of **Danadim Progress** should be used. Applications should be made at the earliest opportunity once the Wheat Bulb Fly larvae have been detected. Do not wait until the 'dead heart' symptoms can be seen

Best results are achieved when the pest is still small.

Only one application of **Danadim Progress** is permitted per crop at this timing.

Apply Danadim Progress at 1700ml/ha in 200-400l/ha water as soon as the pest is seen, or at the first signs of damage.



Where **Danadim Progress** is used in sequence with Broadway Star, a minimum of 14 days should be left between treatments.

For further information please contact your local Headland Agrochemicals representative, or:

Andrew C Speed
Technical Sales Manager
Headland Agrochemicals Ltd.
Home office: 01270 750008
Mobile: 07525 703361
E-mail: andrew.speed@headlandgroup.com

Sam J Pociecha
Technical Sales Specialist
Headland Agrochemicals Ltd.
Home office: 01747 871613
Mobile: 07540 127474
E-mail: sam.pociecha@headlandgroup.com



All third party trademarks acknowledged
Always read the label. Use pesticides safely
Danadim Progress contains dimethoate
Broadway Star contains florasulam + pyroxsulam

