



# Headland

# Technical Update

Thursday, 18 February 2010

## Wheat Bulb Fly Egg-Hatch Sprays – spray now!

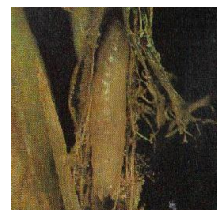
Due to the prolonged cold weather egg hatch has been slow and is likely to be protracted this season. Samples taken during autumn 2009 indicated higher egg counts than recent years, and hence high risk of infestation this spring.

This will mean that close attention will need to be paid to timings of egg hatch sprays, with increased risk to crops from higher egg numbers. We are now at a point where this treatment needs to be applied.

Later drilled crops, emerging slowly and struggling in the cold conditions will be at highest risk with any infestations resulting in plant losses. We cannot afford to lose plants, or even tillers on these crops.

### High risk crops; i.e.:

- those drilled in November or later
- late drilled crops on light or organic soils,
- those following crops where the soil would have been exposed in July and August allowing the adult to lay its eggs e.g.: after onions, sugar beet, beetroot, peas etc.
- any crops with less than 200 plants/m<sup>2</sup>
- Crops with less than 2 tillers per plant at present.



Egg hatch is now underway from East Anglia up through Yorkshire, and Cyren should be applied now as follows:

Apply 1.5 l/ha Cyren in 200+ l/ha water. Soil temperature should ideally be above 5°C. Because of prolonged egg-hatch, a second application may be needed, especially on organic soils.

Where Cyren is used in sequence with Atlantis WG Bayer Cropsciences advise an interval of 4 weeks between treatments, regardless of the order of these treatments. For Broadway star, a minimum of 14 days should be left between treatments.

For further information please contact your local Headland Agrochemicals representative, or:

Andrew C Speed, Technical Sales Manager, Headland Agrochemicals Ltd.

Mobile: 07525 703361

E-mail: [andrew.speed@headlandgroup.com](mailto:andrew.speed@headlandgroup.com)



All third party trademarks acknowledged  
Always read the label. Use pesticides safely  
Cyren contains chlorpyrifos, Atlantis WG contains iodosulfuron-methyl –sodium + mesosulfuron-methyl,  
Broadway Star contains florasulam + pyroxsulam



**CHEMINOVA**